

Vocabulary

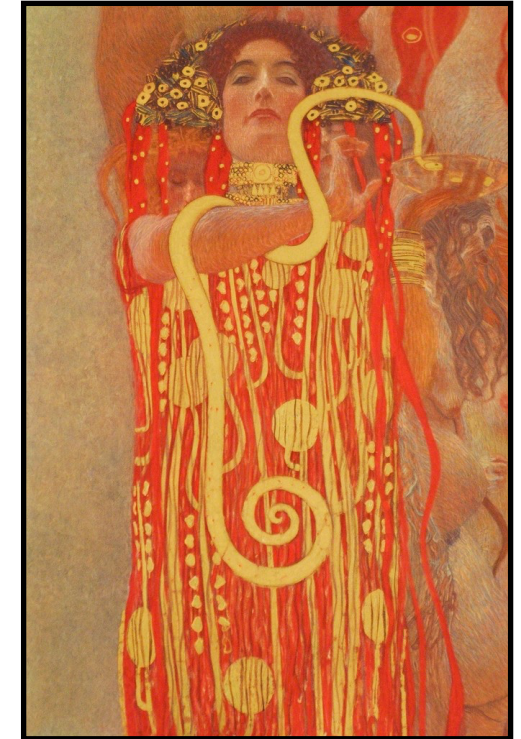
<i>geometric</i>	<i>characterised or decorated with regular lines or shapes</i>
<i>layering</i>	<i>arranging something in layers</i>
<i>cubist</i>	<i>a style of modern art recognisable by its use of geometric shapes</i>
<i>figurative</i>	<i>any form of modern art that references the world or the human figure</i>
<i>overworking</i>	<i>when the artist keeps going back to their work before it is finished or dry - often we can see brushstrokes left in the surface</i>
<i>linear</i>	<i>referring to lines and outlines</i>



Gustav Klimt (1862-1918) was an Austrian artist known for his painting, murals and sketches.

He was involved in several artistic movements including: Symbolism, Art Nouveau and the Vienna Secession.

In many of his artworks, Klimt uses repeated geometric shapes in patterns.



Pablo Picasso (1871-1973) is known for many different styles including: modernism and post-impressionism.



Some of his most recognisable works are cubist (part of the Cubism movement) paintings.

