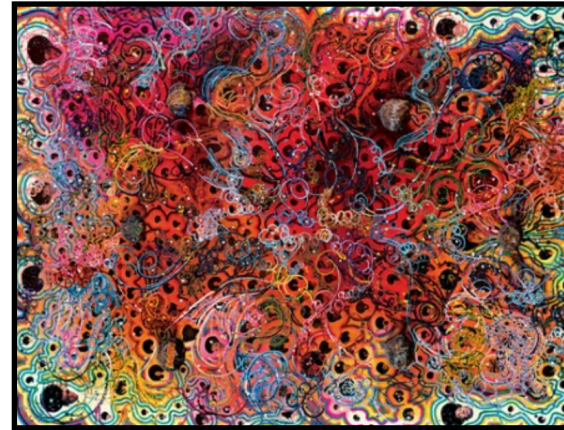
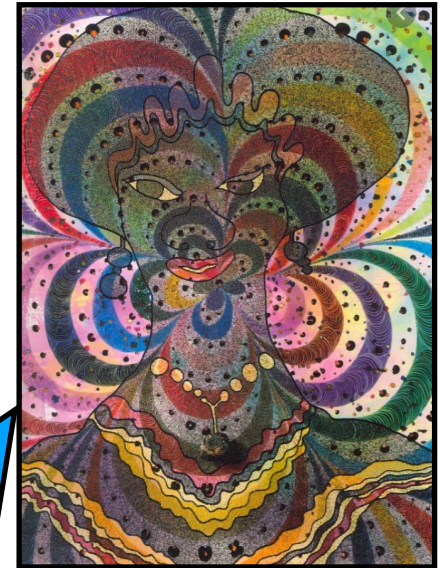


Vocabulary

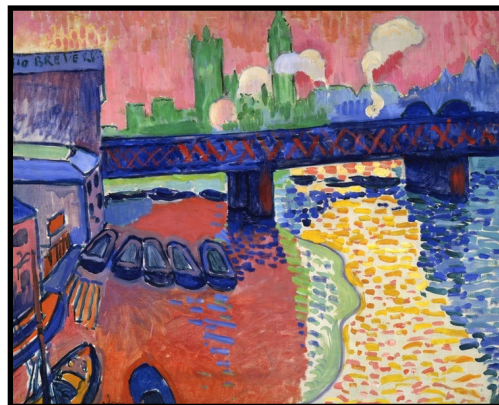
abstract	(art) not attempting to represent reality
layering	reworking paint, either when wet or dry, to build effect
linear	using lines or outlines
transpose	to change or switch
vibrant	full of energy or life
unrealistic	not real-looking, unfeasible
contrasting	arranging opposite elements (light and dark, warm and cold)
expressive	a type of artwork where movement can be felt or seen through the type of brushstrokes or use of colour
adjacent	next to or adjoining
tonking	to hit hard



Chris Ofili is a British artist best known for his paintings incorporating elephant dung.



Fauvism is painting style that began around 1904 but only lasted a few years. The leading Fauvist artists were André Derain and Henri Matisse.



Fauvism was inspired by the prior work of Vincent Van Gogh and Paul Cezanne.

The name 'Fauvism' comes from these artists' new and experimental style 'les fauves' meaning 'wild beasts'. They were noted for their bold brush strokes and impasto application of paint.

